

STATE DATA

Based on 2015-2019 American Community
Survey population estimates.

5,562

STUDY POPULATION:

Women and girls
with ancestral ties to
countries where FGM/C
is practiced

1,514

Women and girls who
were likely **LIVING
WITH** FGM/C

389

Girls who were likely
AT RISK of FGM/C

STATE LEGISLATION AND POLICY LANDSCAPE

STATUS

Strong **Existing Legislation**¹

IMPROVE BY ADDING

Annual Statistical Reporting;
Mandatory Training for Law
Enforcement

¹ <https://bit.ly/3qGwohq>

SUMMARY

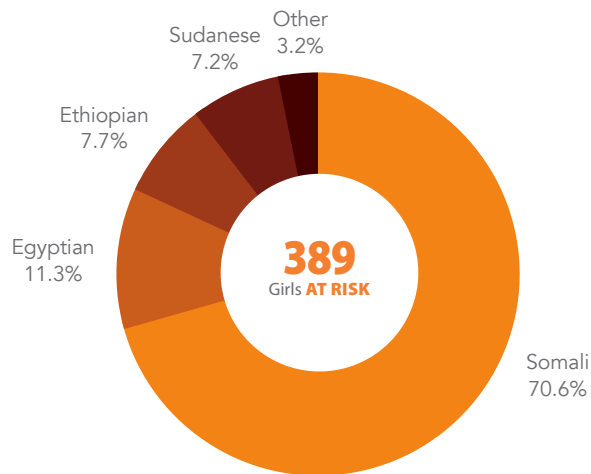
FGM/C prevalence was estimated at 34.2% within the study population in Utah with over 60% of the impacted population in the state identifying as Somali (51.2%) or Sudanese (13.1%).

It is estimated that **710** women were living with Type 3 FGM/C in Utah. While all survivors may require some level of medical and mental health support, those living with Type 3 would likely require additional medical attention.

81% of those impacted by FGM/C in Utah live in the greater Salt Lake City metropolitan area.

ETHNIC BREAKDOWN

Ethnic breakdown of girls most likely
to be **AT RISK** of FGM/C in Utah



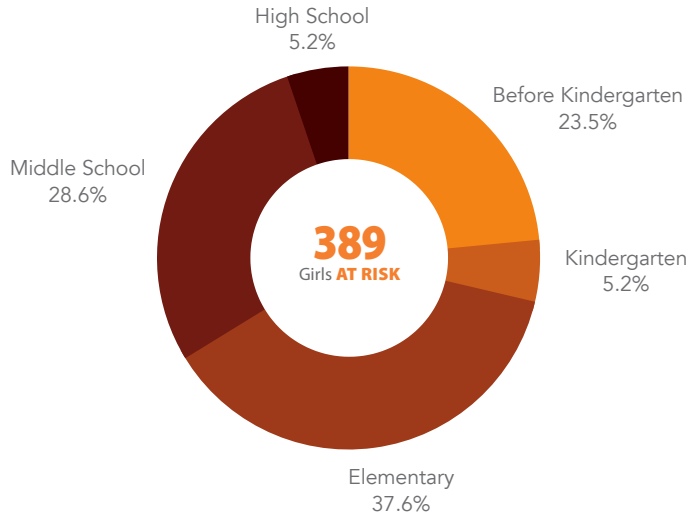
NOTE: Indonesian girls are likely underrepresented in this data since they are cut at a very young age, resulting in most girls being encoded as already living with FGM/C.

STATE PREVALENCE RANKING



AGE DISTRIBUTION

Distribution of girls most likely to be **AT RISK** of FGM/C in Utah



SPATIAL DISTRIBUTION

Counties with the highest
STUDY POPULATION | **LIVING WITH** | **AT RISK** population

Salt Lake	3,897	1,210	328
Cache	226	95	-
Utah	481	77	14
Washington	418	39	31
Summit	71	30	-
Weber	125	23	-
Davis	199	14	11
Morgan	20	9	-

Metropolitan Areas with the highest
STUDY POPULATION | **LIVING WITH** | **AT RISK** population

Salt Lake City, UT	3,976	1,212	333
Provo-Orem, UT	481	76	14
Ogden-Clearfield, UT	418	39	31

CALL TO ACTION

Interventions tailored to the specifics of the context.

State legislators should prioritize strengthening existing legislation.

Prevention and response interventions should focus on the greater Salt Lake City metropolitan area.

Child Protection should focus on **Somali** girls between the ages of 5 and 15; and **Egyptian** girls between the ages of 6 and 14.

All estimates are subject to both sampling and nonsampling error.

For more granular prevalence data contact info@theahafoundation.org

scan
to access
the full report

